



Herschel Smart Switch

Instructions



Please read these instructions thoroughly before using.

S-HSS



Specifications

Input voltage: AC 100-240V 50/60Hz

Load: 20A / 3200W

Wiring: Live + Neutral. Appliance is Class II and does not require earthing

Wireless: 2.4GHz

Wireless power consumption: < 0.3 W

Maximum operating humidity: <80%

Operating temperature range: 0-40 °C

Housing material: PC flame-retardant plastic

Size: 86 x 86 x 33mm

2 year warranty

Compliance

Hereby, Herschel Infrared Ltd declares that the radio equipment type S-HSS Smart Switch is in compliance with Directive 2014/53/EU. The full text of the EU declaration of conformity is available at the following internet address:
<https://bit.ly/45KHgut>

Wiring

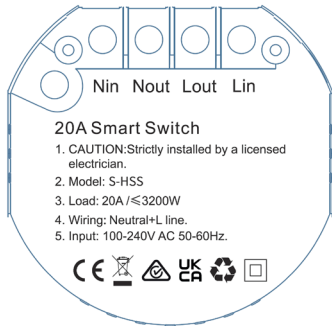
Safety:

For indoor use only. This product must be installed by a competent person in accordance with EU and national regulations.

Always isolate the AC mains supply before installing or working on any components that require 230V AC 50 Hz mains.

This appliance is rated IPX0 and must be installed outside of the splash zones in bathrooms.

The S-HSS is a Class II electrical appliance and does not require an Earth connection. However, any Herschel heaters connected to it are Class I appliances and must still be earthed. Connect the heater earth lead to the mains earth separate from the HSS Control (connection not supplied).



Installation

Choose a suitable location for your controller, within range of a 2.4Ghz Wi-Fi network.

A single gang pattress box 46mm deep is required for mounting, and mounting holes are 60mm apart.

Download the Smart Life App

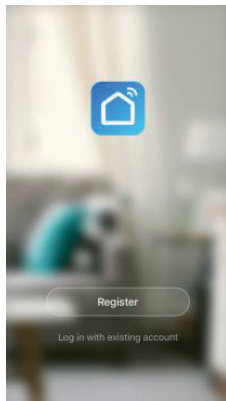
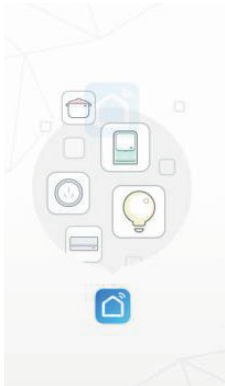
Scan the QR code below to download the Smart Life App from the App Store or Google Play.

Alternatively, search “Smart Life” on Google Play or the App Store & look for this icon and download the app.



Register with Smart Life

Run SmartLife on your phone or tablet.



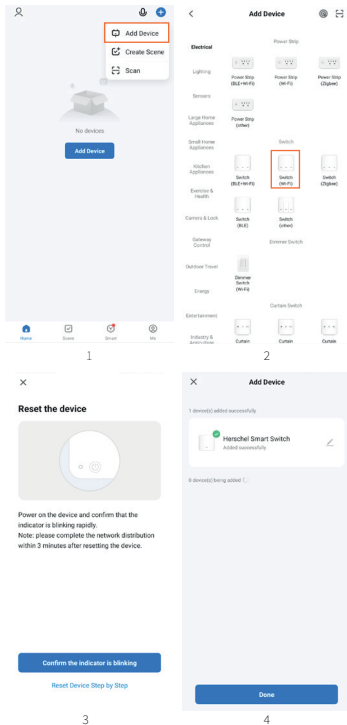
Register and log in

Pairing the Smart Switch

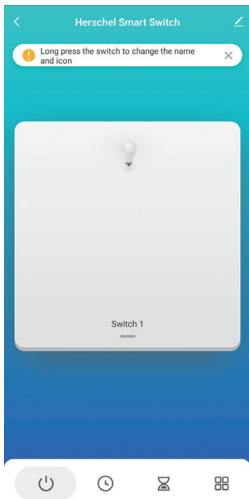
Ensure you are on a 2.4GHz WiFi network, otherwise pairing will not succeed.

1. With the Smart Life app open, click the '+' sign in the top right corner to add a device, enter the 'Electrical' column, and tap 'Switch (WiFi)'.
2. Enter WiFi details of a 2.4GHz WiFi network.
3. Once you are connected to a WiFi network, hold the button on the Smart Switch for about 8 seconds, until the device indicator flashes.
4. Click 'Confirm that the indicator flashes quickly', and wait for the Switch to be successfully added.

The Smart Switch will now be added to your Smart Life devices.



Using the Herschel Smart Switch



The device can now be switched on/off from your phone or tablet through the SmartLife app.

To change the name and icon of the Smart Switch, long press on the Switch.

Other options are also available by tapping on the icons along the bottom. The ⌚ icon is where you can create Schedules, the ⌚ icon allows you to add Countdowns or Delays, and the 3x3 icon opens the Settings, where you can see the Switch Log, edit the Relay Status, and edit the LED light on the Smart Switch device.

The Smart Switch can operate as a directly-wired on/off switch for another appliance or the same function can be operated via the Smart Life app.

The Smart Switch can also operate other Herschel controls and devices via Scenes without being directly wired to them.



Use the QR code found on the right to access these Scenes.

Herschel has created a video of sample Scenes setup, to allow you to get the best possible energy saving out of your heating using Herschel Heaters & Thermostats, the Smart Switch and Smart Life.

